



**Iso Analytics, Inc.**  
 6135 NW 167 Street  
 Suite E 15  
 Miami Lakes, FL 33015  
 (754) 736-6431  
 testing@isoanalytics.org



**ISO ANALYTICS**

# Analysis Report

**Client** Mellow Fellow

**Batch #** MF-E0301

**Test Reg State** Florida

**Batch Date** 9/13/2021

**Production Facility** DelCann Edibles

**Extracted from** Hemp

**Production Date** 9/13/2021

**Sample Name** D10 Diamonds  
Cherry Pie

**Order Date** 9/13/2021

**Sample Type** Inhalable

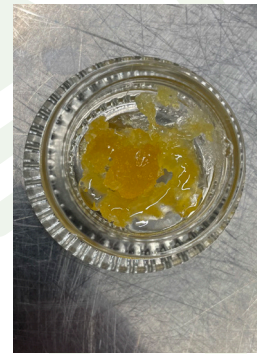
**Date Received** 9/14/2021

**Sample ID** IA-47442

**Lab Batch Date** 9/14/2021

**Net Weight (g)** 2.16

**Date Completed** 9/15/2021



**Product Image**

## Potency Summary

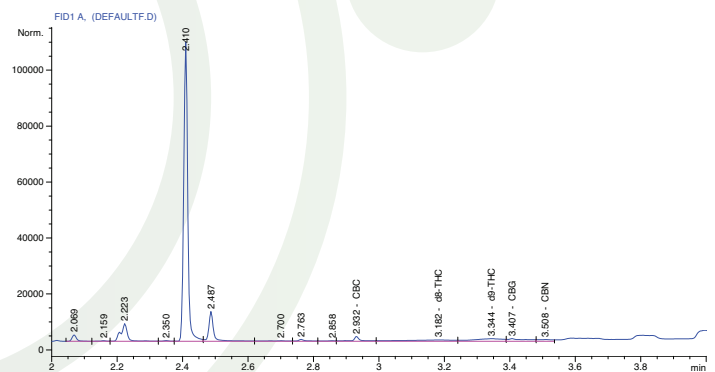
<b>Total Delta 8</b> 332.3	<b>Total THC</b> 0.000
<b>Total Delta 9</b> 0.000	<b>Total Delta 10</b> 562.800
<b>Total CBG</b> None Detected	<b>Total CBD</b> 882.200
<b>Total CBN</b> None Detected	<b>Total Cannabinoids</b> 1777.300

## Cannabinoid Profile Tested by GC/FID

### Potency 12 Test

Analyte	LOD %	LOQ %	Result (mg/g)	Result (%)
Δ8-THC	0.000	0.001	332.3	33.23
Δ9-THC	0.000	0.001	0.000	<LOQ
Δ10-THC	0.000	0.001	562.800	56.28
CBC	0.000	0.001	0.000	<LOQ
CBD	0.000	0.001	882.200	88.22
THCV	0.000	0.001	0.000	<LOQ
THCA-A	0.000	0.001	0.000	<LOQ
CBN	0.000	0.001	0.000	<LOQ
CBGA	0.000	0.001	0.000	<LOQ
CBG	0.000	0.001	0.000	<LOQ
CBDV	0.000	0.001	0.000	<LOQ
CBDA	0.000	0.001	0.000	<LOQ

### Chromatogram



ND = Not Detected; NT = Not Tested; LOD = Limit of Detection;  
 LOQ = Limit of Quantitation; RL = Reporting Limit; Δ = Delta;  
 Total Δ9-THC = Δ9-THCA \* 0.877 + Δ9-THC; Total CBD = CBDA \* 0.877 + CBD

## ISO ANALYTICS, INC.

This sample has been tested by Iso Analytics, Inc. using valid testing methodologies and a quality system. Values reported relate only to the sample tested. Iso Analytics, Inc. makes no claims as to the efficacy, safety or other risks associated with any detected or non-detected levels of any compounds reported herein. This Report shall not be reproduced except in full, without the written approval of Iso Analytics, Inc.

Charles Lewis, PhD  
 Chief Scientist  
 Iso Analytics, Inc.